

# Introducing Gender Indicator into the EU Innovation Union Scoreboard

Hans M Borchgrevink

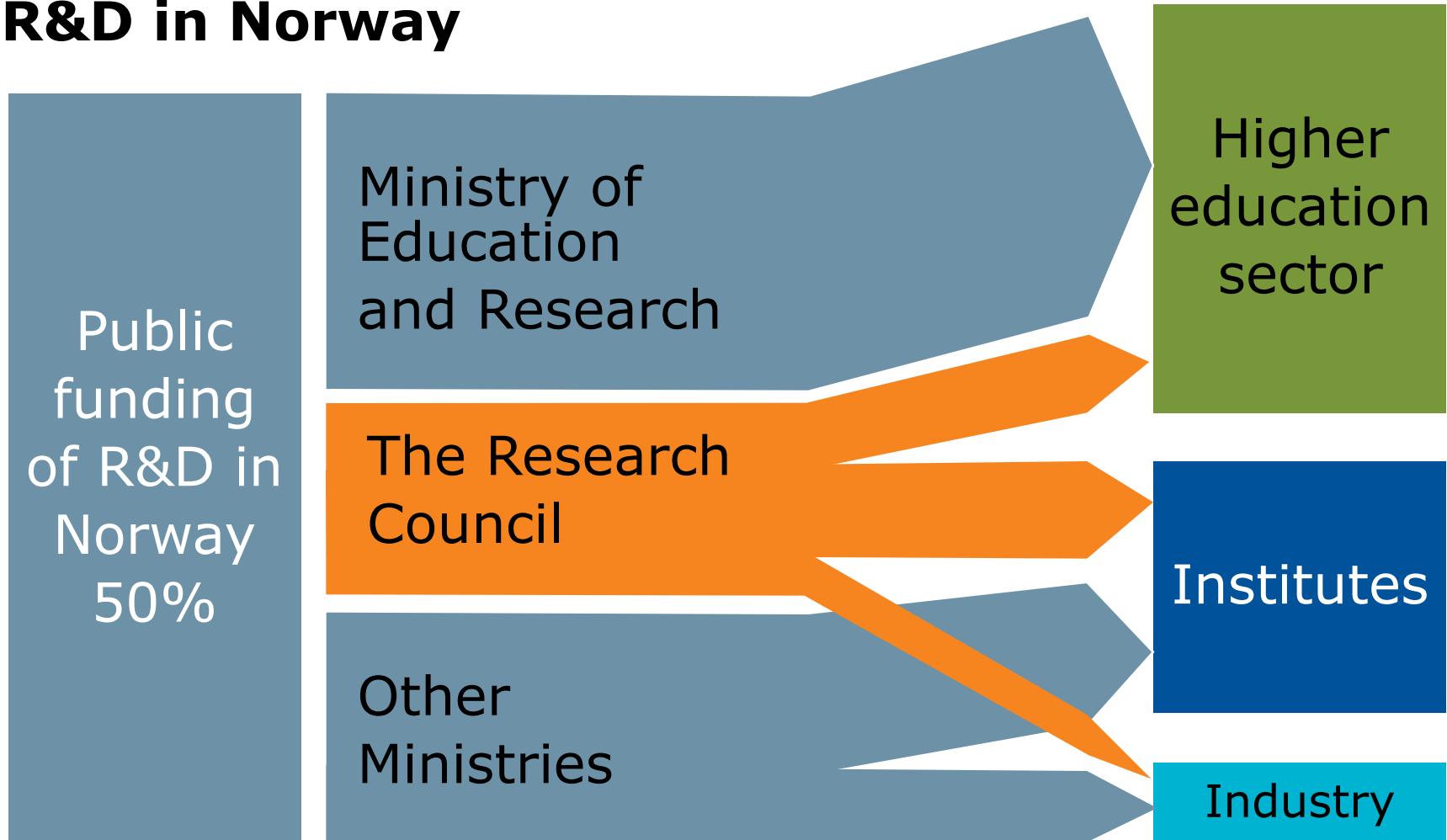
Special Adviser, The Research Council of Norway (RCN)

Co-delegate **ERA SGHRM** and Chair WG Monitoring and Indicators

Delegate **ESF MO Forum** on researcher careers and Chair WG Mobility

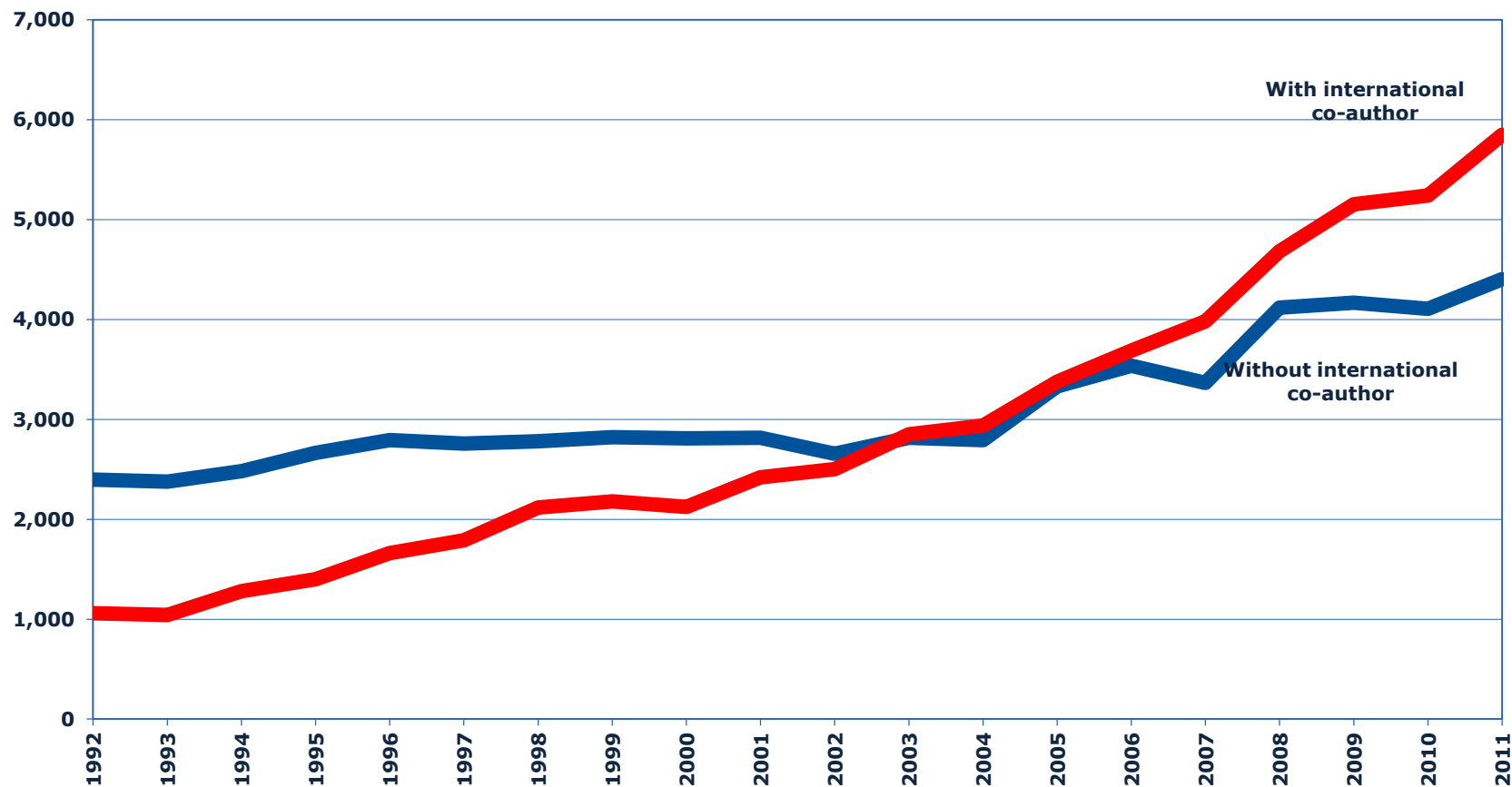
**2. European Gender Summit  
Plenary session 2  
Brussels 29-30 Nov 2012**

# Norway has one Research Council (RCN) covering all fields including innovation, distributing ~30% of total public spending on R&D in Norway

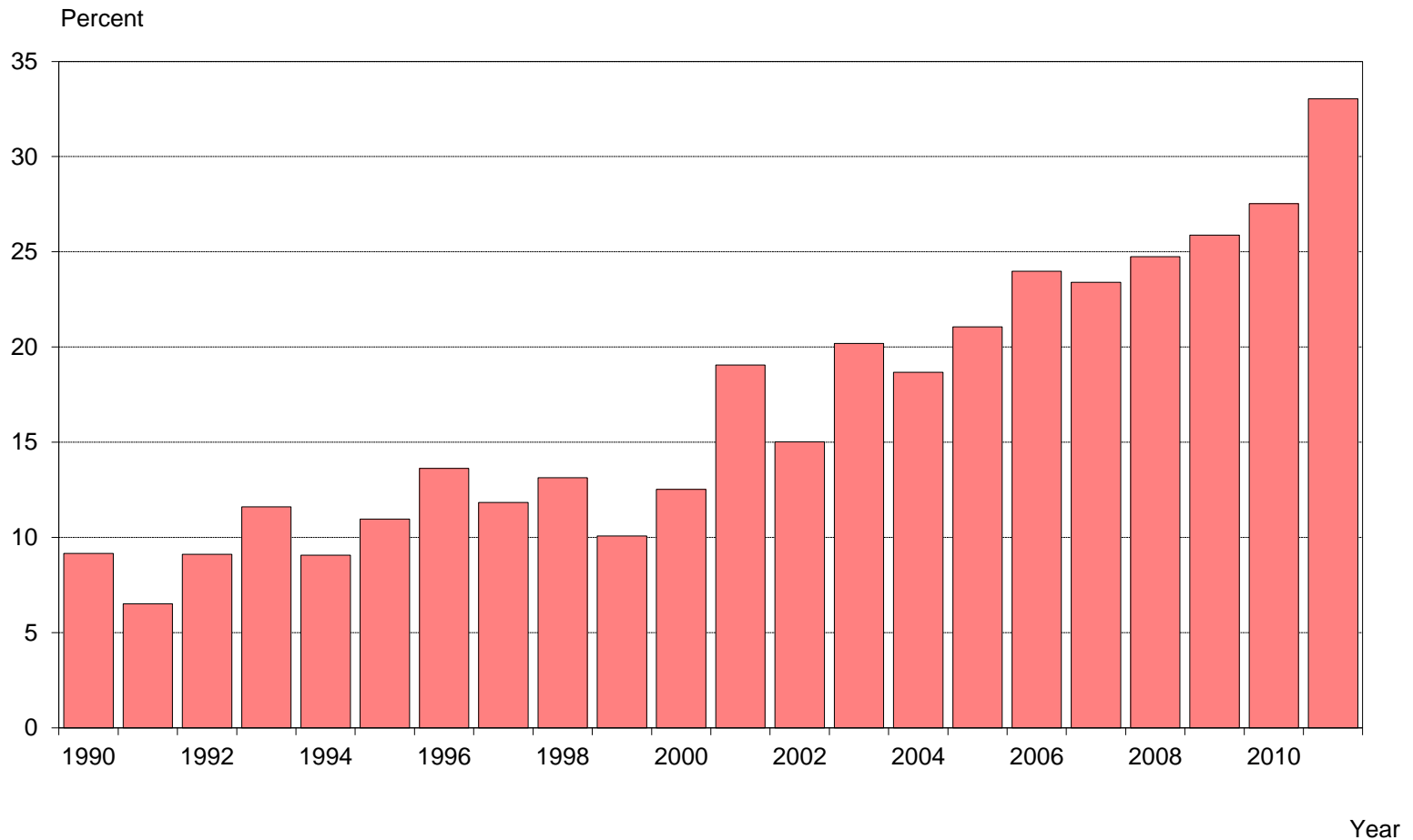


# Norwegian research: increasing international co-publication

Antall

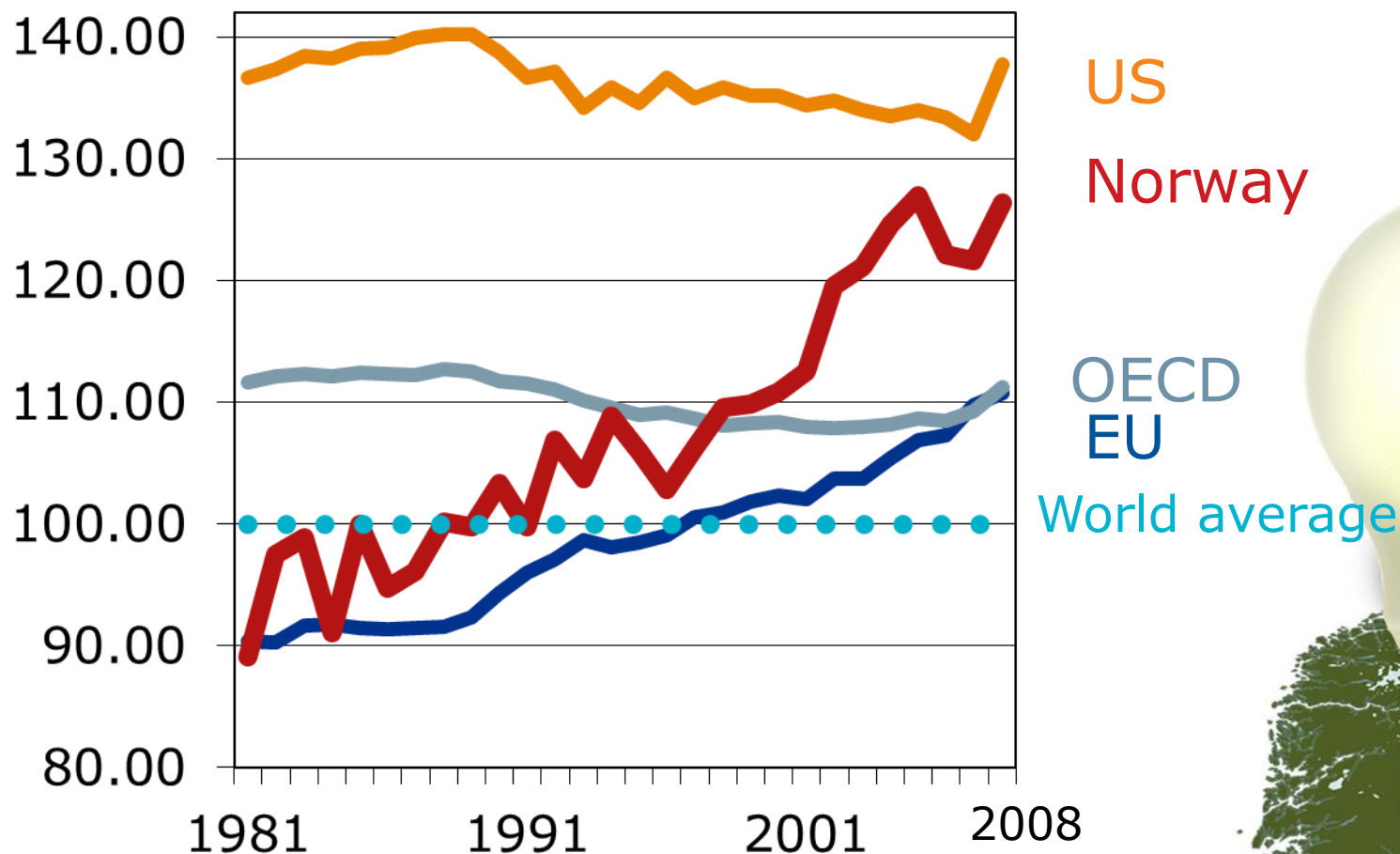


# PhDs in Norway by foreigners 1990-2011

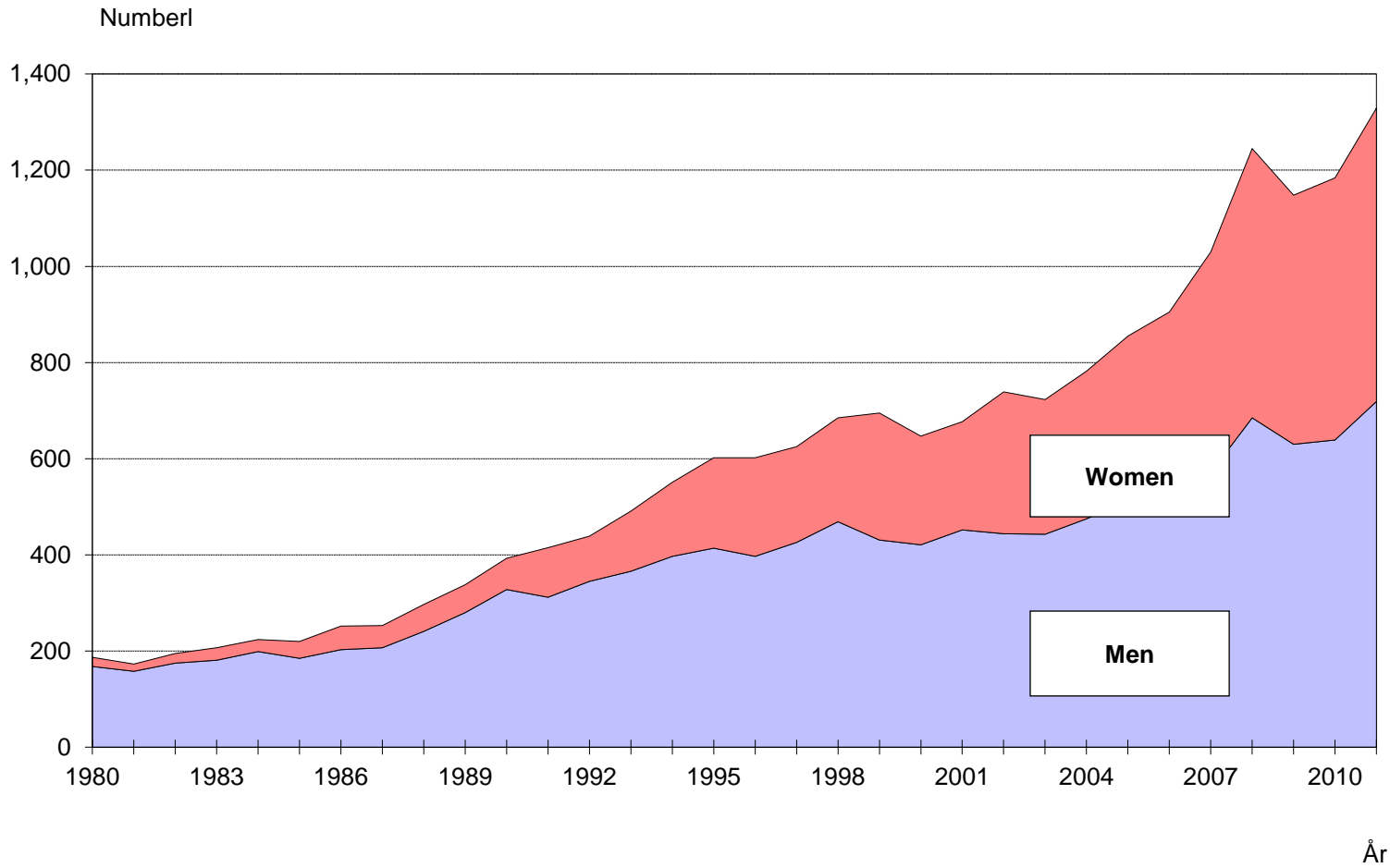


Kilde: Doktorgradsregisteret/NIFU

# The Citation index: Internationalisation improves Scientific Impact

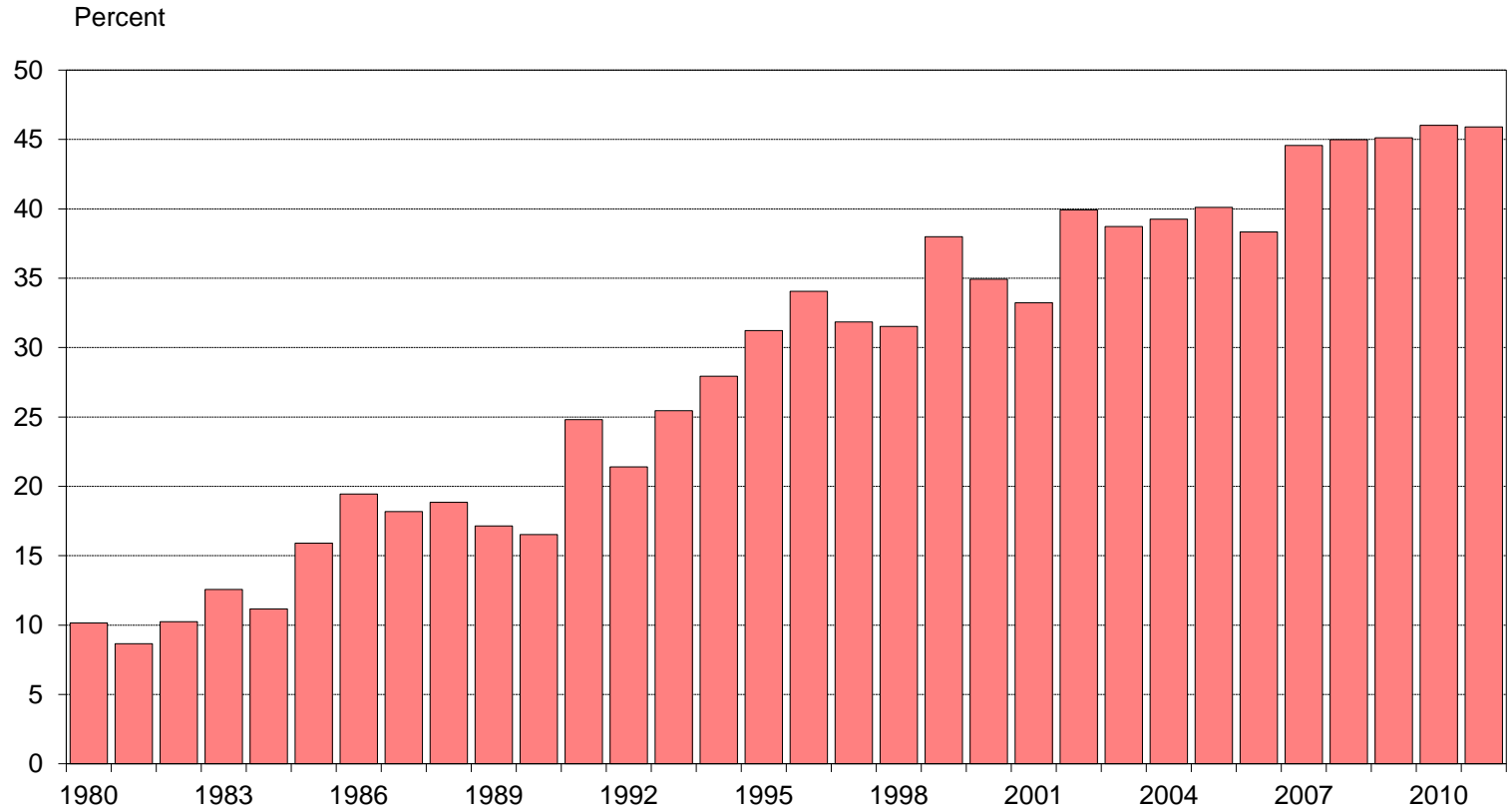


# Doctoral degrees in Norway 1980-2011

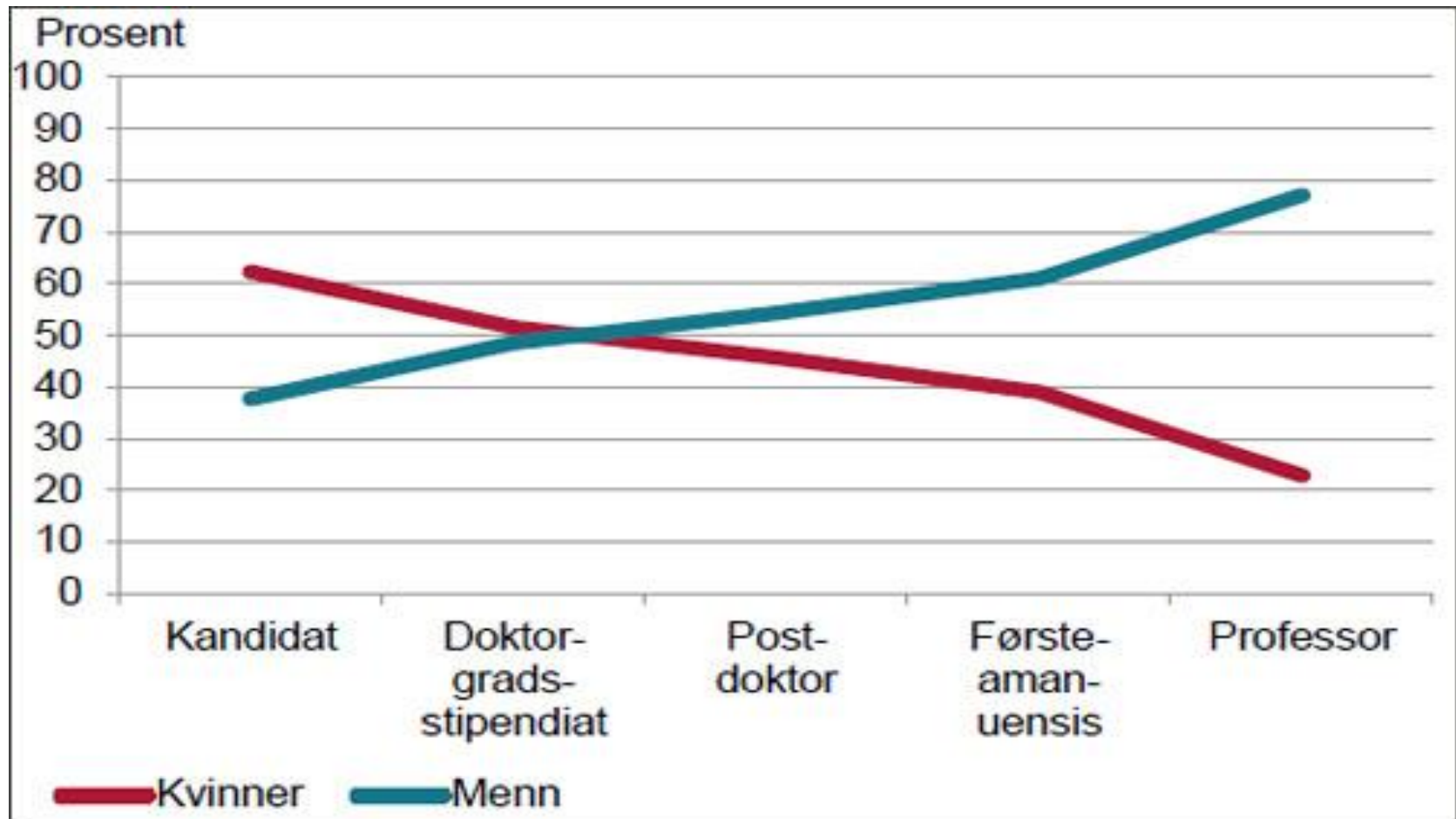


Kilde: Doktorgradsregisteret/NIFU

# Doctoral degrees in Norway 1980-2011 - percentage women

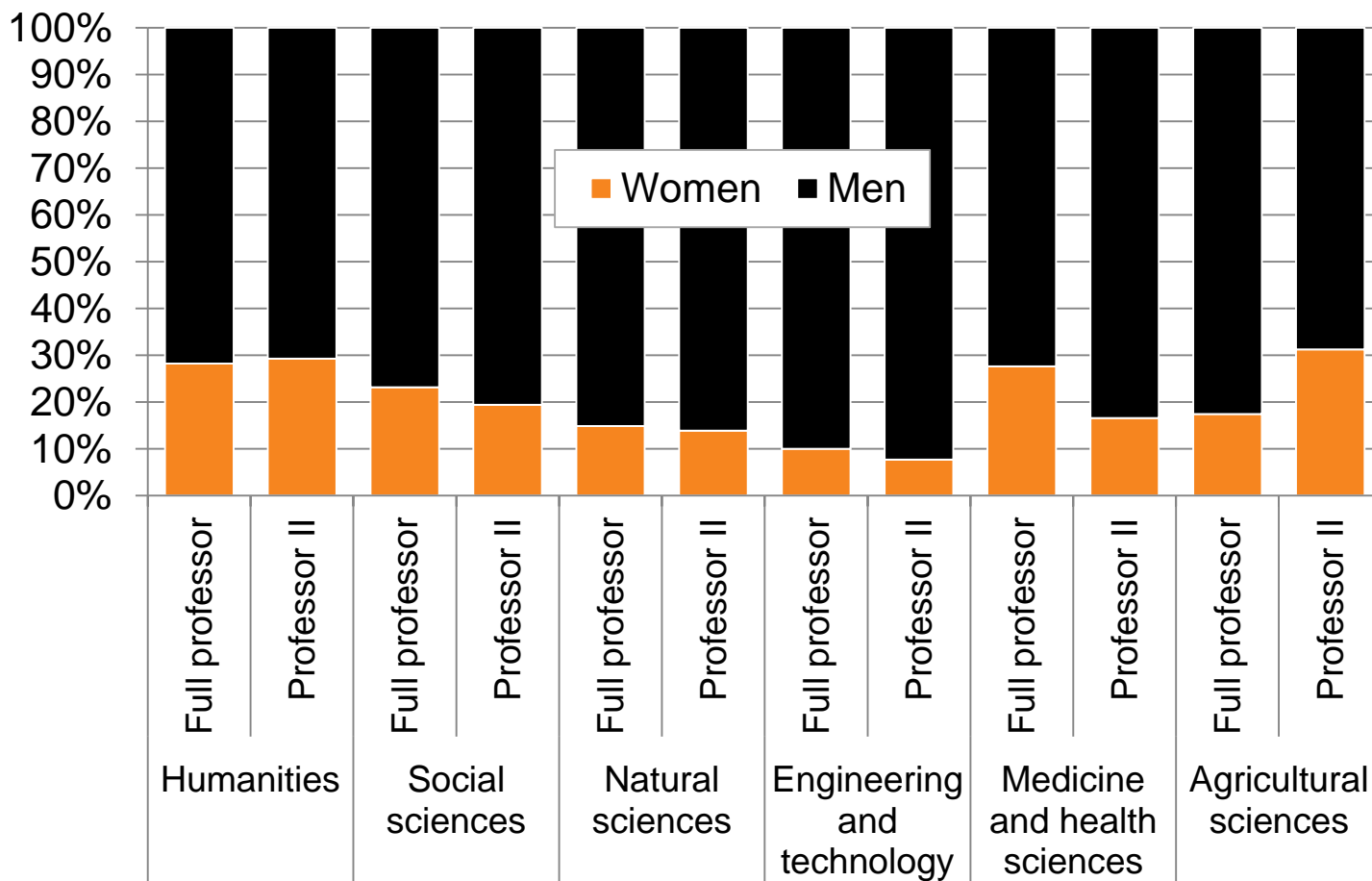


## Norway: Percent of women and men at different academic levels (2011)

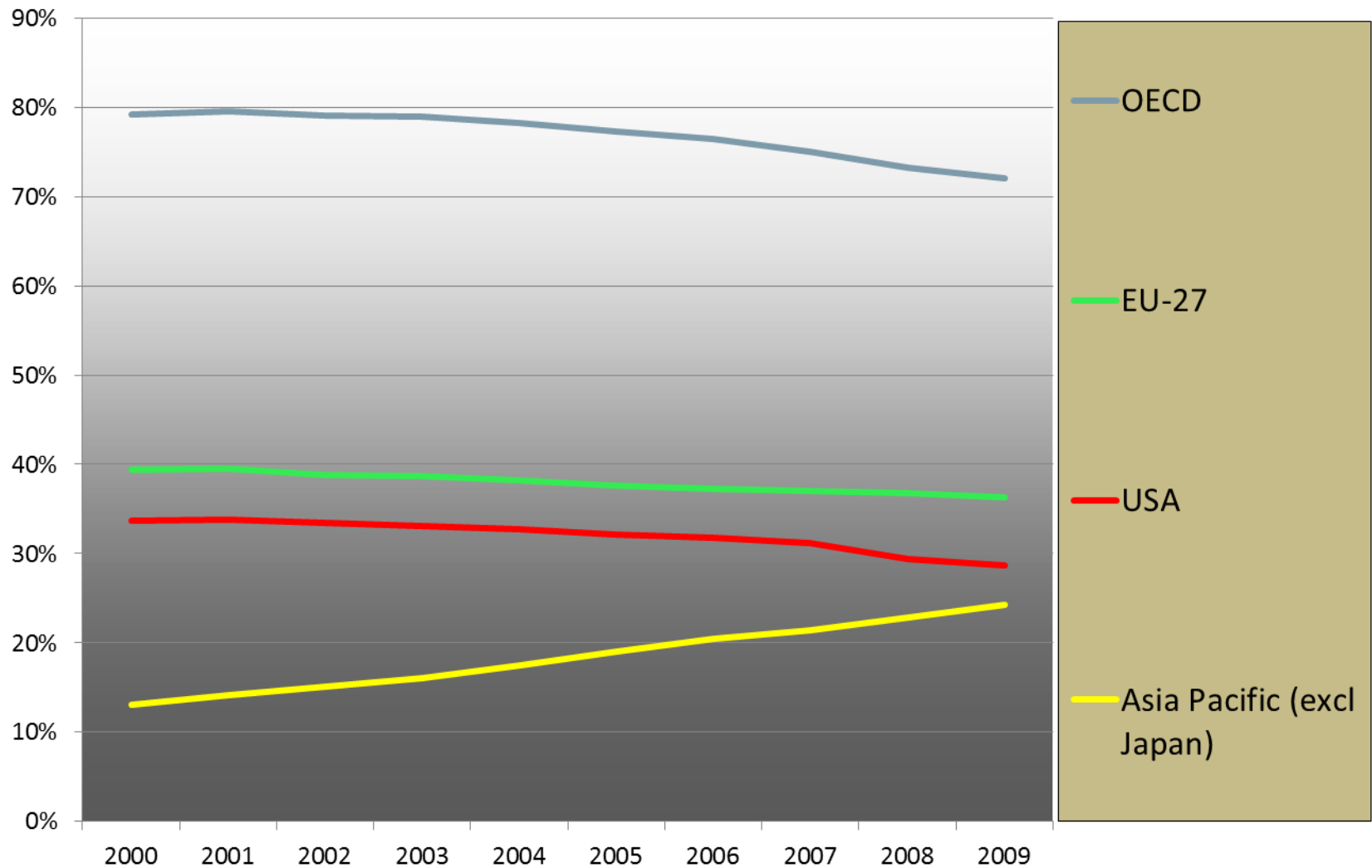




# Share of women and men for full professor and professor II: 2010 (%)



## Shares of the world's scientific output (Thomsen/ISI 2000-2009)



# Important initiatives as basis for globally competitive industry in high-cost Europe

- **The framework programme (FP7)**
  - controlling only some 6-7% of governmental R&D funding
- **The European Research Area (ERA) initiatives: in place by 2014**
- **ERAC** (the European Research Area Committee) **reporting to the European Parliament and the Council**
- **ERA WGs reporting to ERAC**
  - GPC Joint Programming Initiatives (proposed: 10 JPIs)
  - ESFRI (research infrastructure)
  - SGHRM (**mobility & researcher recruitment incl gender, to increase diversity & scientific quality by utilising women's potential**)
  - KTWG Knowledge Transfer and IPR
  - SFIC European coordination of research collaboration with 3. countries and emerging economies (BRIC, USA...)
- **Horizon 2020 – preparation of the next framework programme**, e.g. with input to Marie Curie mobility schemes
- **Science Europe** –replacing ESF - representing >93% of governmental R&D funding – **plans new WGs including one on Gender & Diversity spring 2013**
- **Monitoring: by Innovation Union Scoreboard + ERA Indicators**

# We need to introduce a Gender Indicator into the EU Innovation Union Scoreboard

- **Gender indicator** proposed by the WG Monitoring and Indicators under the ERA Steering Group for Human Resources and Mobility (SGHRM) reporting to ERAC  
**for inclusion in the EU Innovation Union Scoreboard**  
[http://ec.europa.eu/enterprise/policies/innovation/facts-figures-analysis/innovation-scoreboard/index\\_en.htm](http://ec.europa.eu/enterprise/policies/innovation/facts-figures-analysis/innovation-scoreboard/index_en.htm)
- **«% women in Grade A researcher positions»**  
(the right-most part of the SHE figures «scissors» diagram)  
**- the % women is only ~20% in most European countries**
- **Indicator approved by the ERA SGHRM spring 2012**
- **Supported by most people presented for the idea**
- **Inclusion of this gender indicator** in the Innovation Union Scoreboard, and as ERA gender indicator, should be a **main conclusion of The European Gender Summit 2012**